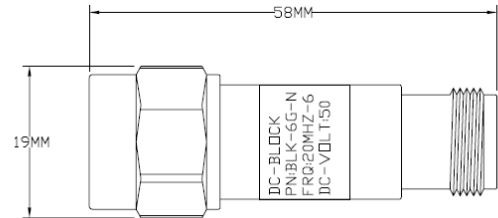


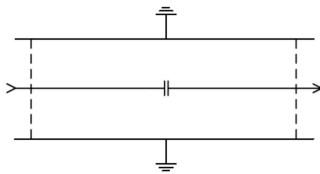
COAXIAL DC Block 0.03 -6GHz

Model: BLK-6G-N(M,F)-E



DC-Blocks prevent DC current flow while permitting RF power to flow, thus to isolate DC power from signal sources and measure instruments with broadband performance and low insertion loss.

Electrical Schematic



MECHANICAL SPECIFICATIONS	
CONNECTORS	Brass (Nickel Plated)
PIN	Brass Silver Plate
BODY	Brass (Nickel Plated)
INSULATOR	PTFE Virgin Electrical Grade
DIAMENSION	Ø19 X 57mm
OPERATING TEMP.	-55° C to +125° C
WEIGHT kg	0.1

Specifications:

Model	Frequency Range(GHz)	Max VSWR	Voltage DC	Dimensions (mm)	Nominal impedance
BLK-6G-N(M,F)-E	0.03 - 3	≤1.20	50	Ø19 x 57	50Ω
	3 - 6	≤1.30			

POWE RATING: 5 Watts
CONNECTOR TYPE: N TYPE

Notes:

- 1) Dimensions Tolerance ±5%
- 2) Dimension and specifications refer to connector type N unless otherwise specified
- 3) Customer designs available for other special attenuators value and accuracy