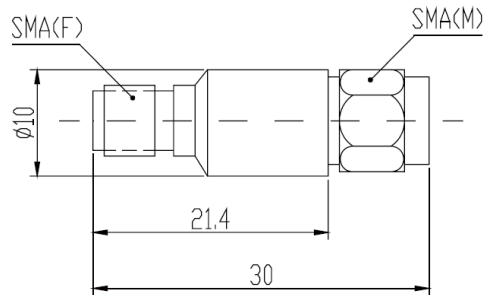


## 2W Coaxial Fixed Attenuators DC-18GHz

Model SMA DC-18GHz 2 Watts



Coaxial fixed attenuators are used in absorbing energy of transmission line, expanding power range and controlling power level, they are also used in accurately measuring power or spectrum of RF microwave transmitters accompany with small power meter, comprehensive tester or spectrum analyzer.

SMA coaxial fixed attenuators' average power 2W, frequency range from DC-18GHz and feature wide frequency band, low VSWR, flatness attenuation value and excellent capacity in anti-pulse and anti-burnout etc.

| MECHANICAL SPECIFICATIONS |                              |
|---------------------------|------------------------------|
| Connectors                | Brass Gold Plated            |
| Male Pin                  | Brass Gold Plated            |
| Female Pin                | Beryllium Copper Gold Plated |
| Housing                   | Brass Gold Plated            |
| Temp Range                | -55° C ~ +125° C             |
| Dimensions                | $\phi 10 \times 30$ mm       |
| Weight                    | 10g                          |

**RoHS Compliant: Yes**

### ELECTRICAL SPECIFICATIONS

| Model Number | Frequency Range (GHz) | Attenuation Value & Accuracy (dB) |            |           |           | Max VSWR |
|--------------|-----------------------|-----------------------------------|------------|-----------|-----------|----------|
|              |                       | 1-9                               | 10         | 20        | 30        |          |
| SMA-XX-3     | DC-3                  | $\pm 0.5$                         | $\pm 0.5$  | $\pm 0.6$ | $\pm 0.6$ | 1.15     |
| SMA-XX-4     | DC-4                  | $\pm 0.5$                         | $\pm 0.5$  | $\pm 0.6$ | $\pm 0.6$ | 1.15     |
| SMA-XX-6     | DC-6                  | $\pm 0.6$                         | $\pm 0.5$  | $\pm 0.8$ | $\pm 0.8$ | 1.20     |
| SMA-XX-8     | DC-8                  | $\pm 0.6$                         | $\pm 0.5$  | $\pm 0.8$ | $\pm 0.8$ | 1.20     |
| SMA-XX-12.4  | DC-12.4               | $\pm 0.8$                         | $\pm 0.75$ | $\pm 1.0$ | $\pm 1.0$ | 1.30     |
| SMA-XX-18    | DC-18                 | $\pm 1.0$                         | $\pm 1.0$  | $\pm 1.0$ | $\pm 1.0$ | 1.35     |

Note: XX refer to attenuation value in dB

**NOMINAL IMPEDANCE:** 50 $\Omega$

**AVERAGE POWER:** 2W average to 25°C ambient temperature, derated linearly to 0.5W @ 125°C.

**PEAK POWER:** 0.5KW (5 $\mu$ s pulse width with 0.4% duty cycle)

**CONNECTOR TYPE:** SMA(M,F)

#### Notes:

1. Dimensions Tolerance  $\pm 2\%$
2. Custom designs available for other special attenuation value & accuracy.