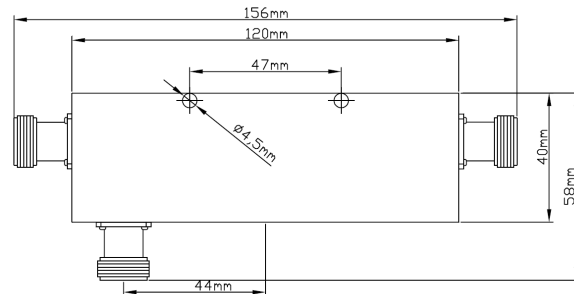


DIRECTIONAL COUPLER 0.8-2.5GHz

Model: DC0825H-NF-XX 0.8 – 2.5GHz 200Watts



ELECTRICAL SPECIFICATIONS

Model	Frequency Range(MHz)	Coupling Value	Insertion Loss	Directivity	Power AVG	Max VSWR
		dB	dB	dB	Watts	
DC-0825NF-6dB	800-2500	6±0.6	1.75	>20	200	≤1.25
DC-0825NF-10dB	800-2500	10±0.8	0.8	>20		≤1.25
DC-0825NF-15dB	800-2500	15±1.0	0.45	>20		≤1.25
DC-0825NF-20dB	800-2500	20±1.0	0.4	>20		≤1.25
DC-0825NF-30dB	800-2500	30±1.0	0.3	>20		≤1.25

Nominal impedance: 50Ω

Mechanical specifications

Connectors	Brass Nickel Plated
Female Pin	Beryllium Copper Gold Plated
Connector:	N type female
Housing	Aluminium Back plated
Temp. Range	-35°C - +125°C
Dimensions	156mm × 38mm
Weight	0.24 kg (packed)

3rd ORDER INTERMODURATION: <-150dBC @2 X 43dBm

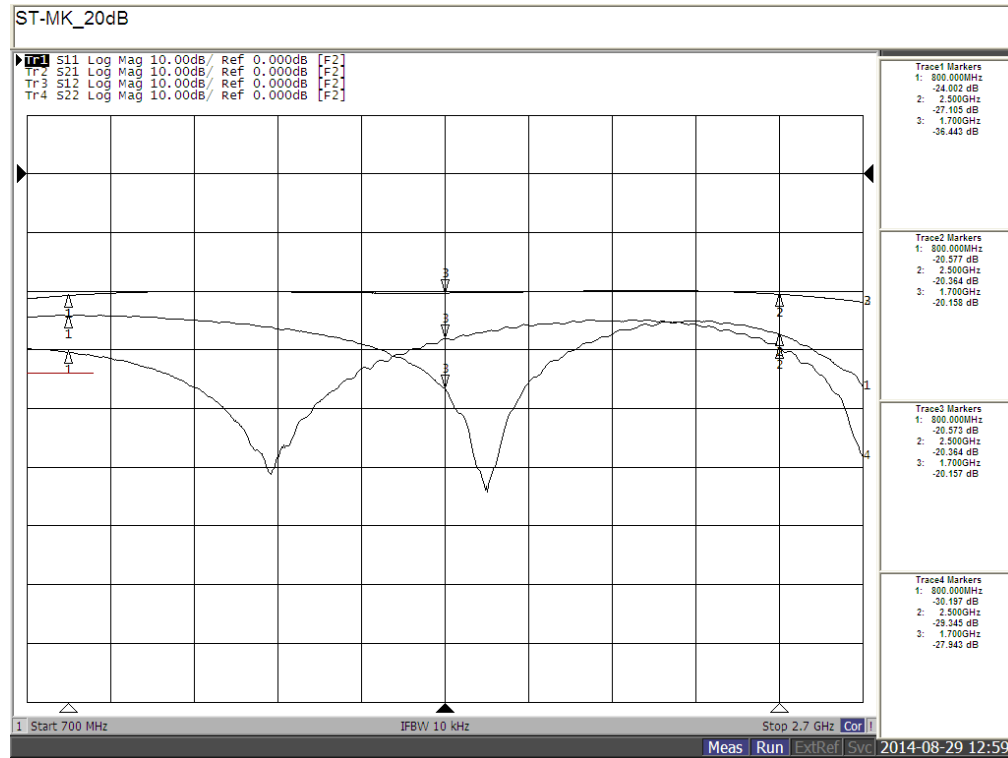
Notes:

- 1) Dimensions Tolerance ±5%
- 2) Dimension and specifications refer to connector type N unless otherwise specified
- 3) Customer designs available for other special attenuators value and accuracy

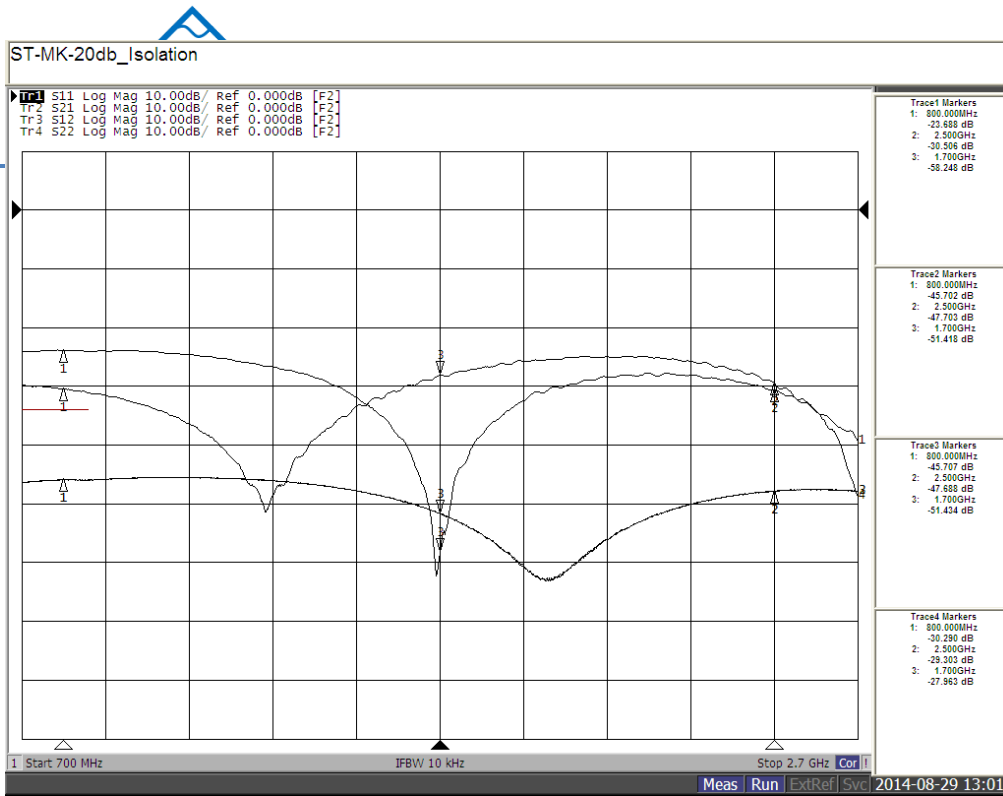
DIRECTIONAL COUPLER 0.8-2.5GHz

Model: DC-0825NF-XX 0.8 – 2.5GHz 200Watts

Coupling Value 20dB -0.5dB, VSWR<1.135



Isolation: > 25dB



0206

DIRECTIONAL COUPLER 0.8-2.5GHz

Model: DC-0825NF-XX 0.8 – 2.5GHz 200Watts

Insertion Loss: < 0.1dB

